

# BLUES MOTIVE

BLAUE ZONE

BLAUE ZONE

DUR BLUES

MOLL BLUES

DUR BLUES

MOLL BLUES

# BLUES MOTIVE

BLAUE ZONE

Musical notation for the first staff of the blues motive. It starts with a treble clef, a key signature of two sharps (F# and C#), and a 4/4 time signature. The melody consists of a quarter note G4, followed by a half note A4-B4, a quarter note C5, a quarter note B4, a quarter note A4, a quarter note G4, and a quarter rest. The second measure contains a quarter note G#4, a quarter note A4, a quarter note B4, a quarter note A4, a quarter note G4, and a quarter note F#4.

BLAUE ZONE

Musical notation for the second staff of the blues motive. It starts with a treble clef, a key signature of two sharps (F# and C#), and a 4/4 time signature. The melody consists of a quarter rest, a quarter note G4, a quarter note F#4, a quarter note E4, a quarter note D4, a quarter note C4, a quarter note B3, a quarter note A3, a quarter note G3, and a quarter note F#3. The second measure contains a quarter note G#4, a quarter note A4, a quarter note B4, a quarter note A4, a quarter note G4, a quarter note F#4, a quarter note E4, a quarter note D4, a quarter note C4, a quarter note B3, a quarter note A3, a quarter note G3, and a quarter note F#3. The third measure contains a quarter note G#4, a quarter note A4, a quarter note B4, a quarter note A4, a quarter note G4, a quarter note F#4, a quarter note E4, a quarter note D4, a quarter note C4, a quarter note B3, a quarter note A3, a quarter note G3, and a quarter note F#3.

3

DUR BLUES

Musical notation for the third staff of the blues motive. It starts with a treble clef, a key signature of two sharps (F# and C#), and a 4/4 time signature. The melody consists of a quarter note G4, a quarter note A4, a quarter note B4, a quarter note A4, a quarter note G4, a quarter note F#4, a quarter note E4, a quarter note D4, a quarter note C4, a quarter note B3, a quarter note A3, a quarter note G3, and a quarter note F#3. The second measure contains a quarter note G#4, a quarter note A4, a quarter note B4, a quarter note A4, a quarter note G4, a quarter note F#4, a quarter note E4, a quarter note D4, a quarter note C4, a quarter note B3, a quarter note A3, a quarter note G3, and a quarter note F#3. The third measure contains a quarter note G#4, a quarter note A4, a quarter note B4, a quarter note A4, a quarter note G4, a quarter note F#4, a quarter note E4, a quarter note D4, a quarter note C4, a quarter note B3, a quarter note A3, a quarter note G3, and a quarter note F#3.

MOLL BLUES

6

DUR BLUES

Musical notation for the fourth staff of the blues motive. It starts with a treble clef, a key signature of two sharps (F# and C#), and a 4/4 time signature. The melody consists of a quarter note G4, a quarter note A4, a quarter note B4, a quarter note A4, a quarter note G4, a quarter note F#4, a quarter note E4, a quarter note D4, a quarter note C4, a quarter note B3, a quarter note A3, a quarter note G3, and a quarter note F#3. The second measure contains a quarter note G#4, a quarter note A4, a quarter note B4, a quarter note A4, a quarter note G4, a quarter note F#4, a quarter note E4, a quarter note D4, a quarter note C4, a quarter note B3, a quarter note A3, a quarter note G3, and a quarter note F#3. The third measure contains a quarter note G#4, a quarter note A4, a quarter note B4, a quarter note A4, a quarter note G4, a quarter note F#4, a quarter note E4, a quarter note D4, a quarter note C4, a quarter note B3, a quarter note A3, a quarter note G3, and a quarter note F#3.

MOLL BLUES

8

# BLUES MOTIVE

BLAUE ZONE

3

BLAUE ZONE

3

DUR BLUES

MOLL BLUES

6

DUR BLUES

MOLL BLUES

8

# BLUES FORM / BLUES TONLEITER

DUR BLUES FORM

C<sup>7</sup>

F<sup>7</sup>

C<sup>7</sup>

C<sup>7</sup>

BLAUE ZONE



F<sup>7</sup>

BLAUE ZONE

F<sup>7</sup>

BLAUE ZONE

C<sup>7</sup>

C<sup>7</sup>



5

Dmin<sup>7</sup>

G<sup>7</sup>

(BLAUE ZONE)

C<sup>7</sup>

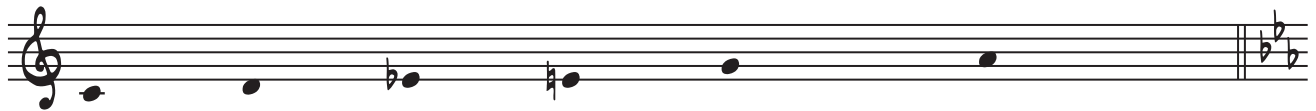
Dmin<sup>7</sup>

G<sup>7</sup>



9

DUR BLUES TONLEITER



13

MOLL BLUES FORM

Cmin

Dmin<sup>7(b5)</sup> G<sup>7</sup>

Cmin

Gmin<sup>7(b5)</sup> C<sup>7</sup>



14

Fmin<sup>7</sup>

Cmin



18

A<sup>b7</sup>

G<sup>7</sup>

Cmin<sup>7</sup>

Dmin<sup>7(b5)</sup> G<sup>7</sup>



22

MOLL BLUES TONLEITER



26

# BLUES FORM / BLUES TONLEITER

## DUR BLUES FORM

$D^7$ 
 $G^7$   
BLAUE ZONE
 $D^7$ 
 $D^7$

$G^7$   
BLAUE ZONE
 $G^7$   
BLAUE ZONE
 $D^7$ 
 $D^7$

$E_{min}^7$ 
 $A^7$   
(BLAUE ZONE)
 $D^7$ 
 $E_{min}^7$   $A^7$

13 5 9

## DUR BLUES TONLEITER

13

## MOLL BLUES FORM

$D_{min}$ 
 $E_{min}^{7(b5)}$   $A^7$ 
 $D_{min}$ 
 $A_{min}^{7(b5)}$   $D^7$

$G_{min}^7$ 
 $D_{min}$

$B^{b7}$ 
 $A^7$ 
 $D_{min}^7$ 
 $E_{min}^{7(b5)}$   $A^7$

14 18 22

## MOLL BLUES TONLEITER

26

# BLUES FORM / BLUES TONLEITER

## DUR BLUES FORM

$A^7$ 
 $D^7$   
BLAUE ZONE
 $A^7$ 
 $A^7$

$D^7$   
BLAUE ZONE
 $D^7$   
BLAUE ZONE
 $A^7$ 
 $A^7$

$Bmin^7$ 
 $E^7$   
(BLAUE ZONE)
 $A^7$ 
 $Bmin^7$   $E^7$

5

9

## DUR BLUES TONLEITER

13

## MOLL BLUES FORM

$Amin$ 
 $Bmin^{7(b5)}$   $E^7$ 
 $Amin$ 
 $Emin^{7(b5)}$   $A^7$

$Dmin^7$ 
 $Amin$

$F^7$ 
 $E^7$ 
 $Amin^7$ 
 $Bmin^{7(b5)}$   $E^7$

14

18

22

## MOLL BLUES TONLEITER

26

# PENTATONICS AND BLUES SCALES

DUR PENTA

DUR BLUES

MOLL PENTA

MOLL BLUES

C

Staff 1: C major pentatonic (C4-D4-E4-F4-G4), C major blues (C4-D4-E4-F4-G4-A4-Bb4), C minor pentatonic (C4-Bb3-Ab3-Gb3-F3), C minor blues (C4-Bb3-Ab3-Gb3-F3-Eb3-Db3).

F

Staff 2: F major pentatonic (F4-G4-A4-Bb4-C5), F major blues (F4-G4-A4-Bb4-C5-D5-Bb4), F minor pentatonic (F4-Eb4-Db4-Cb4-Bb4), F minor blues (F4-Eb4-Db4-Cb4-Bb4-Ab4-Gb4).

Bb

Staff 3: Bb major pentatonic (Bb4-A4-G4-F4-Eb4), Bb major blues (Bb4-A4-G4-F4-Eb4-D4-Ab4), Bb minor pentatonic (Bb4-Ab4-Gb4-Fb4-Eb4), Bb minor blues (Bb4-Ab4-Gb4-Fb4-Eb4-D4-Ab4).

Eb

Staff 4: Eb major pentatonic (Eb4-D4-C4-Bb3-Ab3), Eb major blues (Eb4-D4-C4-Bb3-Ab3-G4-Eb4), Eb minor pentatonic (Eb4-D4-C4-Bb3-Ab3), Eb minor blues (Eb4-D4-C4-Bb3-Ab3-G4-Eb4).

Ab

Staff 5: Ab major pentatonic (Ab4-G4-F4-Eb4-D4), Ab major blues (Ab4-G4-F4-Eb4-D4-C4-Ab4), Ab minor pentatonic (Ab4-G4-F4-Eb4-D4), Ab minor blues (Ab4-G4-F4-Eb4-D4-C4-Ab4).

Db

Staff 6: Db major pentatonic (Db4-C4-Bb3-Ab3-Gb3), Db major blues (Db4-C4-Bb3-Ab3-Gb3-F4-Db4), Db minor pentatonic (Db4-C4-Bb3-Ab3-Gb3), Db minor blues (Db4-C4-Bb3-Ab3-Gb3-F4-Db4).

GB/F#

Staff 7: G major pentatonic (G4-A4-B4-C5-D5), G major blues (G4-A4-B4-C5-D5-E5-B4), G minor pentatonic (G4-F#4-E4-D4-C4), G minor blues (G4-F#4-E4-D4-C4-B4-G4).

B

Staff 8: B major pentatonic (B4-C5-D5-E5-F#5), B major blues (B4-C5-D5-E5-F#5-G#5-B4), B minor pentatonic (B4-A4-G4-F#4-E4), B minor blues (B4-A4-G4-F#4-E4-D4-B4).

E

Staff 9: E major pentatonic (E4-F#4-G4-A4-B4), E major blues (E4-F#4-G4-A4-B4-C#4-B4), E minor pentatonic (E4-D4-C4-B3-A3), E minor blues (E4-D4-C4-B3-A3-G4-E4).

PENTATONICS AND BLUES SCALES

2

A

37

The A major pentatonic scale is shown in four measures. The notes are A4, B4, C#5, D5, and E5. The first two measures show the ascending scale, and the last two show the descending scale. Each note is followed by a fermata.

D

41

The D major pentatonic scale is shown in four measures. The notes are D4, E4, F#4, G4, and A4. The first two measures show the ascending scale, and the last two show the descending scale. Each note is followed by a fermata.

G

45

The G major pentatonic scale is shown in four measures. The notes are G3, A3, B3, C4, and D4. The first two measures show the ascending scale, and the last two show the descending scale. Each note is followed by a fermata.